

INCERCAREA DE PENETRARE DINAMICA USOARA PE CON (PDU)
 CONFORM SR EN ISO 22476-2 Iunie 2006

OBIECTIV: Aeroport Internațional Cluj-Napoca

PDU 2- km 1+780 partea stângă

Inaltimea		N10	R_d [daN/cm ²]	N10 [lov.]	Rd*	Rd (MPa)		
[cm]	[lov/10cm]							
		0	20	40	60	80		
10	13						267,16	3,473
20	17						267,16	4,5417
30	12						267,16	3,2059
40	9						267,16	2,4044
50	10						267,16	2,6716
60	5						267,16	1,3358
70	4						267,16	1,0686
80	3						267,16	0,8015
90	3						230,71	0,6921
100	2						230,71	0,4614
110	3						230,71	0,6921
120	4						230,71	0,9229
130	4						230,71	0,9229
140	7						230,71	1,615
150	9						230,71	2,0764
160	17						230,71	3,9222
170	27						230,71	6,2293
180	23						230,71	5,3064
190	23						203,02	4,6695
200	18						203,02	3,6544
210	12						203,02	2,4363
220	9						203,02	1,8272
230	9						203,02	1,8272
240	23						203,02	4,6695
250	31						203,02	6,2937
260	29						203,02	5,8876
270	30						203,02	6,0906
280	17						203,02	3,4514
290	11						203,02	2,2332
270	16						203,02	3,2483
280	19						203,02	3,8574
290	12						181,26	2,1752
300	12						181,26	2,1752
310	20						181,26	3,6253
320	25						181,26	4,5316
330	16						181,26	2,9002
340	21						181,26	3,8065
350	28						181,26	5,0754
360	25						181,26	4,5316
370	21						181,26	3,8065
380	19						181,26	3,444
390	24						181,26	4,3503
400	14						163,72	2,2921
410	14						163,72	2,2921

420	3	
430	22	
440	20	
450	27	
460	43	
470	24	
480	28	
490	10	
500	9	
510	13	
520	22	
530	33	
540	30	
550	34	
560	45	
570	50	

163,72	0,4912
163,72	3,6018
163,72	3,2744
163,72	4,4204
163,72	7,0399
163,72	3,9292
163,72	4,5841
163,72	1,6372
163,72	1,4735
163,72	2,1283
163,72	3,6018
163,72	5,4027
163,72	4,9115
163,72	5,5664
163,72	7,3673
163,72	8,1859

Intocmit
ing. Alexandru Capanistei



monitorul

INCERCAREA DE PENETRARE DINAMICA USOARA PE CON (PDU)
 CONFORM SR EN ISO 22476-2 Iunie 2006

OBIECTIV: Aeroport Internațional Cluj-Napoca

PDU 3- km 1+600 partea stângă

Încălțimea [cm]	N10 [lov/10cm]	R _d [daN/cm ²]				Rd* (MPa)	Rd (MPa)
		0	20	40	60		
10	6					267,16	1,6029
20	17					267,16	4,5417
30	18					267,16	4,8088
40	20					267,16	5,3431
50	15					267,16	4,0074
60	13					267,16	3,473
70	10					267,16	2,6716
80	5					267,16	1,3358
90	4					230,71	0,9229
100	6					230,71	1,3843
110	9					230,71	2,0764
120	14					230,71	3,23
130	12					230,71	2,7686
140	11					230,71	2,5379
150	13					230,71	2,9993
160	14					230,71	3,23
170	17					230,71	3,9222
180	17					230,71	3,9222
190	15					203,02	3,0453
200	12					203,02	2,4363
210	10					203,02	2,0302
220	9					203,02	1,8272
230	8					203,02	1,6242
240	10					203,02	2,0302
250	11					203,02	2,2332
260	8					203,02	1,6242
270	8					203,02	1,6242
280	5					203,02	1,0151
290	14					203,02	2,8423
270	20					203,02	4,0604
280	24					203,02	4,8725
290	16					181,26	2,9002
300	15					181,26	2,719
310	50					181,26	9,0632

Intocmit,
 ing. Alexandru Capanistei



420	21	
430	18	
440	31	
450	31	
460	34	
470	37	
480	38	
490	33	
500	29	
510	33	
520	32	
530	33	
540	40	
550	44	
560	48	
570	43	
580	45	
590	39	
600	35	
610	47	
620	50	

163,72	3,4381
163,72	2,9469
163,72	5,0753
163,72	5,0753
163,72	5,5664
163,72	6,0576
163,72	6,2213
163,72	5,4027
163,72	4,7478
163,72	5,4027
163,72	5,239
163,72	5,4027
163,72	6,5487
163,72	7,2036
163,72	7,8585
163,72	7,0399
163,72	7,3673
163,72	6,385
163,72	5,7301
163,72	7,6948
163,72	8,1859

Intocmit
ing Alexandru Capanistei



monitorul.ro

INCERCAREA DE PENETRARE DINAMICA USOARA PE CON (PDU)
 CONFORM SR EN ISO 22476-2 Iunie 2006

OBIECTIV: Aeroport Internațional Cluj-Napoca

PDU 4- km 1+300 partea stângă

Încălțimea [cm]	N10 [lov/10cm]	R_d [daN/cm ²]				Rd*	Rd (MPa)
		20	40	60	80		
10	14					267,16	3,7402
20	13					267,16	3,473
30	16					267,16	4,2745
40	20					267,16	5,3431
50	12					267,16	3,2059
60	13					267,16	3,473
70	9					267,16	2,4044
80	8					267,16	2,1373
90	5					230,71	1,1536
100	6					230,71	1,3843
110	6					230,71	1,3843
120	12					230,71	2,7686
130	11					230,71	2,5379
140	11					230,71	2,5379
150	16					230,71	3,6914
160	14					230,71	3,23
170	16					230,71	3,6914
180	17					230,71	3,9222
190	12					203,02	2,4363
200	11					203,02	2,2332
210	13					203,02	2,6393
220	12					203,02	2,4363
230	9					203,02	1,8272
240	11					203,02	2,2332
250	14					203,02	2,8423
260	11					203,02	2,2332
270	10					203,02	2,0302
280	16					203,02	3,2483
290	14					203,02	2,8423
270	19					203,02	3,8574
280	21					203,02	4,2635
290	23					181,26	4,1691
300	24					181,26	4,3503
310	22					181,26	3,9878
320	16					181,26	2,9002
330	19					181,26	3,444
340	21					181,26	3,8065
350	26					181,26	4,7129
360	44					181,26	7,9756
370	39					181,26	7,0693
380	33					181,26	5,9817
390	28					181,26	5,0754
400	33					163,72	5,4027
410	34					163,72	5,5664

420	41	
430	40	
440	45	
450	50	

163,72	6,7124
163,72	6,5487
163,72	7,3673
163,72	8,1859

Intocmit
ing. Alexandru Capanistei



monitorul.ro

INCERCAREA DE PENETRARE DINAMICA USOARA PE CON (PDU)
 CONFORM SR EN ISO 22476-2 Iunie 2006

OBIECTIV: Aeroport Internațional Cluj-Napoca

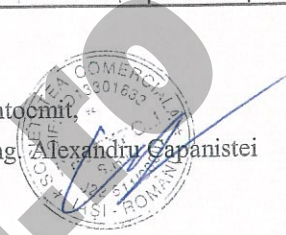
PDU 5- km 0+800 partea stângă

Încaltimea [cm]	N10 [lov/10cm]	R_d [daN/cm ²]				Rd*	Rd (MPa)
		20	40	60	80		
10	14					267,16	3,7402
20	15					267,16	4,0074
30	12					267,16	3,2059
40	16					267,16	4,2745
50	10					267,16	2,6716
60	14					267,16	3,7402
70	12					267,16	3,2059
80	11					267,16	2,9387
90	16					230,71	3,6914
100	19					230,71	4,3836
110	7					230,71	1,615
120	5					230,71	1,1536
130	3					230,71	0,6921
140	7					230,71	1,615
150	12					230,71	2,7686
160	14					230,71	3,23
170	15					230,71	3,4607
180	18					230,71	4,1529
190	14					203,02	2,8423
200	14					203,02	2,8423
210	11					203,02	2,2332
220	17					203,02	3,4514
230	12					203,02	2,4363
240	14					203,02	2,8423
250	18					203,02	3,6544
260	14					203,02	2,8423
270	19					203,02	3,8574
280	23					203,02	4,6695
290	22					203,02	4,4665
270	21					203,02	4,2635
280	24					203,02	4,8725
290	21					181,26	3,8065
300	19					181,26	3,444
310	17					181,26	3,0815
320	19					181,26	3,444
330	24					181,26	4,3503
340	27					181,26	4,8941
350	34					181,26	6,163
360	31					181,26	5,6192
370	23					181,26	4,1691
380	23					181,26	4,1691
390	23					181,26	4,1691
400	31					163,72	5,0753
410	34					163,72	5,5664

420	31	
430	28	
440	25	
450	26	
460	23	
470	34	
480	41	
490	44	
500	39	
510	25	
520	44	
530	43	
540	47	
550	47	
560	49	
570	50	

163,72	5,0753
163,72	4,5841
163,72	4,093
163,72	4,2567
163,72	3,7655
163,72	5,5664
163,72	6,7124
163,72	7,2036
163,72	6,385
163,72	4,093
163,72	7,2036
163,72	7,0399
163,72	7,6948
163,72	7,6948
163,72	8,0222
163,72	8,1859

Intocmit,
ing. Alexandru Gapanistei



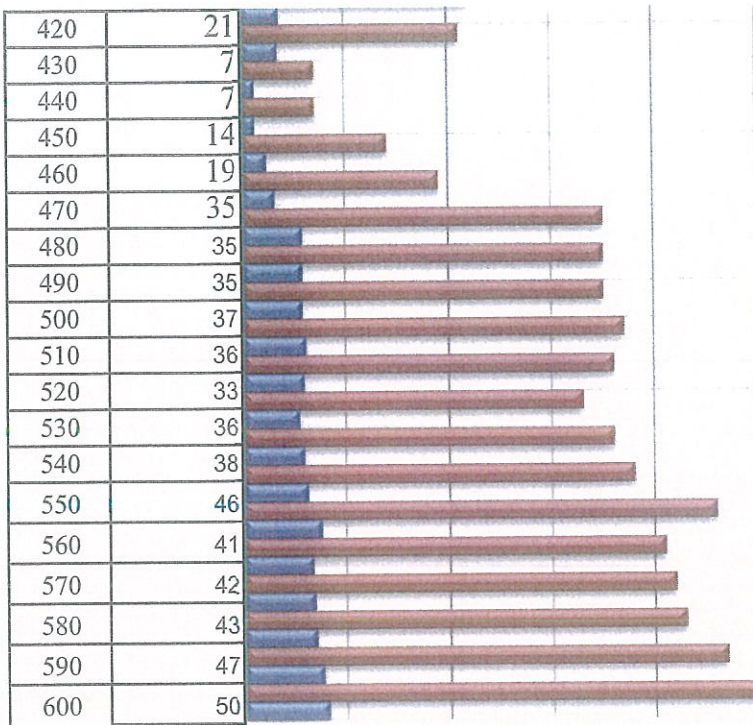
monitorul

INCERCAREA DE PENETRARE DINAMICA USOARA PE CON (PDU)
 CONFORM SR EN ISO 22476-2 Iunie 2006

OBIECTIV: Aeroport Internațional Cluj-Napoca

PDU 6- km 0+300 partea stângă

Încălțimea [cm]	N10 [lov/10cm]	R_d [daN/cm ²]				Rd*	Rd (MPa)
		20	40	60	80		
10	14					267,16	3,7402
20	17					267,16	4,5417
30	9					267,16	2,4044
40	12					267,16	3,2059
50	16					267,16	4,2745
60	8					267,16	2,1373
70	7					267,16	1,8701
80	9					267,16	2,4044
90	4					230,71	0,9229
100	7					230,71	1,615
110	9					230,71	2,0764
120	11					230,71	2,5379
130	15					230,71	3,4607
140	14					230,71	3,23
150	17					230,71	3,9222
160	12					230,71	2,7686
170	9					230,71	2,0764
180	9					230,71	2,0764
190	14					203,02	2,8423
200	2					203,02	0,406
210	1					203,02	0,203
220	3					203,02	0,6091
230	6					203,02	1,2181
240	3					203,02	0,6091
250	4					203,02	0,8121
260	4					203,02	0,8121
270	4					203,02	0,8121
280	3					203,02	0,6091
290	2					203,02	0,406
270	4					203,02	0,8121
280	4					203,02	0,8121
290	5					181,26	0,9063
300	3					181,26	0,5438
310	7					181,26	1,2688
320	9					181,26	1,6314
330	14					181,26	2,5377
340	22					181,26	3,9878
350	23					181,26	4,1691
360	14					181,26	2,5377
370	14					181,26	2,5377
380	23					181,26	4,1691
390	22					181,26	3,9878
400	22					163,72	3,6018
410	22					163,72	3,6018



163,72	3,4381
163,72	1,146
163,72	1,146
163,72	2,2921
163,72	3,1106
163,72	5,7301
163,72	5,7301
163,72	5,7301
163,72	6,0576
163,72	5,8939
163,72	5,4027
163,72	5,8939
163,72	6,2213
163,72	7,531
163,72	6,7124
163,72	6,8762
163,72	7,0399
163,72	7,6948
163,72	8,1859

Intocmit
ing. Alexandru Capanistei



monitorul.ro

INCERCAREA DE PENETRARE DINAMICA USOARA PE CON (PDU)
 CONFORM SR EN ISO 22476-2 Iunie 2006

OBIECTIV: Aeroport Internațional Cluj-Napoca

PDU 7- km 0+000 partea stângă

Încălțimea [cm]	N10 [lov/10cm]	R_d [daN/cm ²]				Rd*	Rd (MPa)
		20	40	60	80		
10	11					267,16	2,9387
20	8					267,16	2,1373
30	10					267,16	2,6716
40	6					267,16	1,6029
50	6					267,16	1,6029
60	6					267,16	1,6029
70	5					267,16	1,3358
80	5					267,16	1,3358
90	8					230,71	1,8457
100	7					230,71	1,615
110	8					230,71	1,8457
120	7					230,71	1,615
130	7					230,71	1,615
140	7					230,71	1,615
150	7					230,71	1,615
160	7					230,71	1,615
170	8					230,71	1,8457
180	6					230,71	1,3843
190	5					203,02	1,0151
200	7					203,02	1,4212
210	7					203,02	1,4212
220	6					203,02	1,2181
230	7					203,02	1,4212
240	6					203,02	1,2181
250	6					203,02	1,2181
260	5					203,02	1,0151
270	4					203,02	0,8121
280	8					203,02	1,6242
290	7					203,02	1,4212
270	21					203,02	4,2635
280	25					203,02	5,0755
290	24					181,26	4,3503
300	19					181,26	3,444
310	27					181,26	4,8941
320	46					181,26	8,3381
330	38					181,26	6,888
340	27					181,26	4,8941
350	13					181,26	2,3564
360	9					181,26	1,6314
370	14					181,26	2,5377
380	26					181,26	4,7129
390	26					181,26	4,7129
400	26					163,72	4,2567
410	20					163,72	3,2744

420	11		163,72	1,8009
430	4		163,72	0,6549
440	4		163,72	0,6549
450	6		163,72	0,9823
460	9		163,72	1,4735
470	13		163,72	2,1283
480	15		163,72	2,4558
490	15		163,72	2,4558
500	17		163,72	2,7832
510	16		163,72	2,6195
520	16		163,72	2,6195
530	12		163,72	1,9646
540	8		163,72	1,3097
550	16		163,72	2,6195
560	9		163,72	1,4735
570	12		163,72	1,9646
580	24		163,72	3,9292
590	24		163,72	3,9292
600	27		163,72	4,4204
610	15		163,72	2,4558
620	12		163,72	1,9646
630	10		163,72	1,6372
640	12		163,72	1,9646
650	7		163,72	1,146
660	4		163,72	0,6549
670	4		163,72	0,6549
680	4		163,72	0,6549
690	7		163,72	1,146
700	6		163,72	0,9823
710	7		163,72	1,146
720	8		163,72	1,3097
730	11		163,72	1,8009
740	13		163,72	2,1283
750	10		163,72	1,6372
760	14		163,72	2,2921
770	14		163,72	2,2921
780	14		163,72	2,2921
790	14		163,72	2,2921
800	14		163,72	2,2921
810	19		163,72	3,1106
820	20		163,72	3,2744
830	17		163,72	2,7832
840	16		163,72	2,6195
850	18		163,72	2,9469
860	27		163,72	4,4204
870	35		163,72	5,7301
880	34		163,72	5,5664
890	39		163,72	6,385

Intocmit
ing. Alexandru Capamistei



INCERCAREA DE PENETRARE DINAMICA USOARA PE CON (PDU)
 CONFORM SR EN ISO 22476-2 Iunie 2006

OBIECTIV: Aeroport Internațional Cluj-Napoca

PDU 8- km 0+310 partea dreaptă

Încălțimea [cm]	N10 [lov/10cm]	R_d [daN/cm ²]				Rd*	Rd (MPa)
		20	40	60	80		
10	14					267,16	3,7402
20	12					267,16	3,2059
30	16					267,16	4,2745
40	12					267,16	3,2059
50	9					267,16	2,4044
60	9					267,16	2,4044
70	8					267,16	2,1373
80	7					267,16	1,8701
90	8					230,71	1,8457
100	7					230,71	1,615
110	9					230,71	2,0764
120	12					230,71	2,7686
130	10					230,71	2,3071
140	11					230,71	2,5379
150	11					230,71	2,5379
160	12					230,71	2,7686
170	16					230,71	3,6914
180	19					230,71	4,3836
190	7					203,02	1,4212
200	7					203,02	1,4212
210	9					203,02	1,8272
220	6					203,02	1,2181
230	9					203,02	1,8272
240	4					203,02	0,8121
250	4					203,02	0,8121
260	5					203,02	1,0151
270	7					203,02	1,4212
280	7					203,02	1,4212
290	6					203,02	1,2181
270	6					203,02	1,2181
280	7					203,02	1,4212
290	9					181,26	1,6314
300	11					181,26	1,9939
310	17					181,26	3,0815
320	12					181,26	2,1752
330	10					181,26	1,8126
340	12					181,26	2,1752
350	13					181,26	2,3564
360	17					181,26	3,0815
370	17					181,26	3,0815
380	19					181,26	3,444
390	19					181,26	3,444
400	23					163,72	3,7655
410	24					163,72	3,9292

420	19		163,72	3,1106
430	17		163,72	2,7832
440	17		163,72	2,7832
450	12		163,72	1,9646
460	11		163,72	1,8009
470	19		163,72	3,1106
480	25		163,72	4,093
490	23		163,72	3,7655
500	22		163,72	3,6018
510	16		163,72	2,6195
520	28		163,72	4,5841
530	44		163,72	7,2036
540	41		163,72	6,7124
550	38		163,72	6,2213
560	31		163,72	5,0753
570	28		163,72	4,5841
580	33		163,72	5,4027
590	33		163,72	5,4027
600	35		163,72	5,7301
610	37		163,72	6,0576
620	37		163,72	6,0576
630	41		163,72	6,7124
640	45		163,72	7,3673
650	48		163,72	7,8585
660	50		163,72	8,1859

Intocmit,
ing. Alexandru Capanistei



monitorul.ro

INCERCAREA DE PENETRARE DINAMICA USOARA PE CON (PDU)
 CONFORM SR EN ISO 22476-2 Iunie 2006

OBIECTIV: Aeroport Internațional Cluj-Napoca

PDU 8- km 0+310 partea dreaptă

Încăleimea [cm]	N10 [lov/10cm]	R_d [daN/cm ²]				Rd*	Rd (MPa)
		0	20	40	60		
10	14					267,16	3,7402
20	12					267,16	3,2059
30	16					267,16	4,2745
40	12					267,16	3,2059
50	9					267,16	2,4044
60	9					267,16	2,4044
70	8					267,16	2,1373
80	7					267,16	1,8701
90	8					230,71	1,8457
100	7					230,71	1,615
110	9					230,71	2,0764
120	12					230,71	2,7686
130	10					230,71	2,3071
140	11					230,71	2,5379
150	11					230,71	2,5379
160	12					230,71	2,7686
170	16					230,71	3,6914
180	19					230,71	4,3836
190	7					203,02	1,4212
200	7					203,02	1,4212
210	9					203,02	1,8272
220	6					203,02	1,2181
230	9					203,02	1,8272
240	4					203,02	0,8121
250	4					203,02	0,8121
260	5					203,02	1,0151
270	7					203,02	1,4212
280	7					203,02	1,4212
290	6					203,02	1,2181
270	6					203,02	1,2181
280	7					203,02	1,4212
290	9					181,26	1,6314
300	11					181,26	1,9939
310	17					181,26	3,0815
320	12					181,26	2,1752
330	10					181,26	1,8126
340	12					181,26	2,1752
350	13					181,26	2,3564
360	17					181,26	3,0815
370	17					181,26	3,0815
380	19					181,26	3,444
390	19					181,26	3,444
400	23					163,72	3,7655
410	24					163,72	3,9292

420	19		163,72	3,1106
430	17		163,72	2,7832
440	17		163,72	2,7832
450	12		163,72	1,9646
460	11		163,72	1,8009
470	19		163,72	3,1106
480	25		163,72	4,093
490	23		163,72	3,7655
500	22		163,72	3,6018
510	16		163,72	2,6195
520	28		163,72	4,5841
530	44		163,72	7,2036
540	41		163,72	6,7124
550	38		163,72	6,2213
560	31		163,72	5,0753
570	28		163,72	4,5841
580	33		163,72	5,4027
590	33		163,72	5,4027
600	35		163,72	5,7301
610	37		163,72	6,0576
620	37		163,72	6,0576
630	41		163,72	6,7124
640	45		163,72	7,3673
650	48		163,72	7,8585
660	50		163,72	8,1859

Intocmit,
ing. Alexandru Capamistei



monitorul.ro

INCERCAREA DE PENETRARE DINAMICA USOARA PE CON (PDU)
 CONFORM SR EN ISO 22476-2 Iunie 2006

OBIECTIV: Aeroport Internațional Cluj-Napoca

PDU 9- km 0+620 partea dreaptă

Încălțimea [cm]	N10 [lov/10cm]	R_d [daN/cm ²]	N10 [lov.]					Rd*	Rd (MPa)
				20	40	60	80		
10	17							267,16	4,5417
20	17							267,16	4,5417
30	18							267,16	4,8088
40	14							267,16	3,7402
50	14							267,16	3,7402
60	12							267,16	3,2059
70	10							267,16	2,6716
80	9							267,16	2,4044
90	8							230,71	1,8457
100	12							230,71	2,7686
110	16							230,71	3,6914
120	11							230,71	2,5379
130	13							230,71	2,9993
140	9							230,71	2,0764
150	8							230,71	1,8457
160	8							230,71	1,8457
170	8							230,71	1,8457
180	16							230,71	3,6914
190	14							203,02	2,8423
200	14							203,02	2,8423
210	11							203,02	2,2332
220	16							203,02	3,2483
230	17							203,02	3,4514
240	11							203,02	2,2332
250	11							203,02	2,2332
260	10							203,02	2,0302
270	9							203,02	1,8272
280	23							203,02	4,6695
290	26							203,02	5,2786
270	27							203,02	5,4816
280	23							203,02	4,6695
290	23							181,26	4,1691
300	29							181,26	5,2567
310	27							181,26	4,8941
320	29							181,26	5,2567
330	31							181,26	5,6192
340	30							181,26	5,4379
350	34							181,26	6,163
360	25							181,26	4,5316
370	20							181,26	3,6253
380	21							181,26	3,8065
390	21							181,26	3,8065
400	20							163,72	3,2744
410	24							163,72	3,9292

420	25		163,72	4,093
430	25		163,72	4,093
440	34		163,72	5,5664
450	35		163,72	5,7301
460	33		163,72	5,4027
470	37		163,72	6,0576
480	39		163,72	6,385
490	31		163,72	5,0753
500	31		163,72	5,0753
510	25		163,72	4,093
520	34		163,72	5,5664
530	33		163,72	5,4027
540	35		163,72	5,7301
550	47		163,72	7,6948
560	44		163,72	7,2036
570	41		163,72	6,7124
580	48		163,72	7,8585
590	48		163,72	7,8585
600	49		163,72	8,0222
610	41		163,72	6,7124
620	38		163,72	6,2213
630	35		163,72	5,7301
640	41		163,72	6,7124
650	45		163,72	7,3673
660	50		163,72	8,1859

Intocmit
ing. Alexandru Capanistei



monitorul.ro